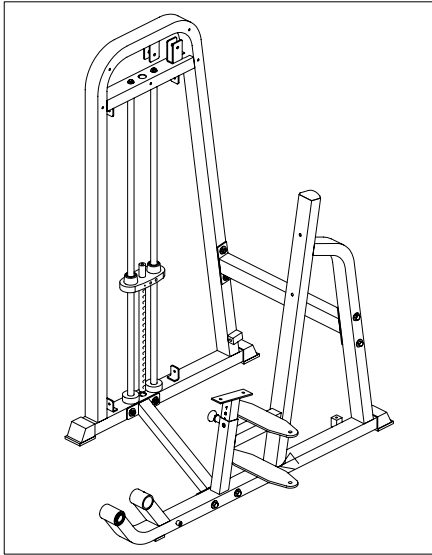


STEP 1

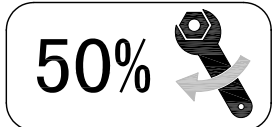
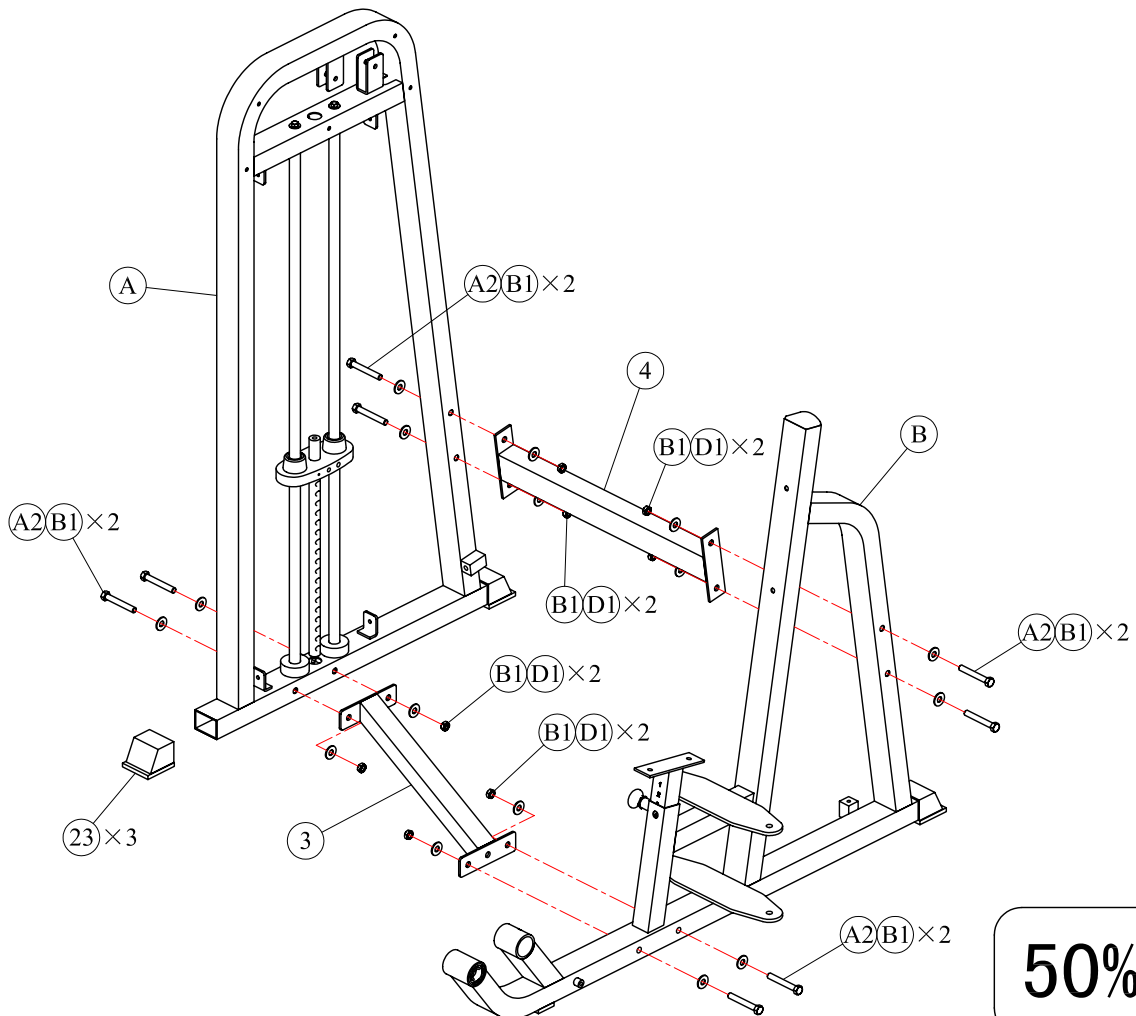
NOTE: During each assembly step, ensure that all bolts and nuts are in place and partially threaded in before completely tightening any one bolt. Two people will be required to perform this procedure.



Above shows step 1 assembled and completed.

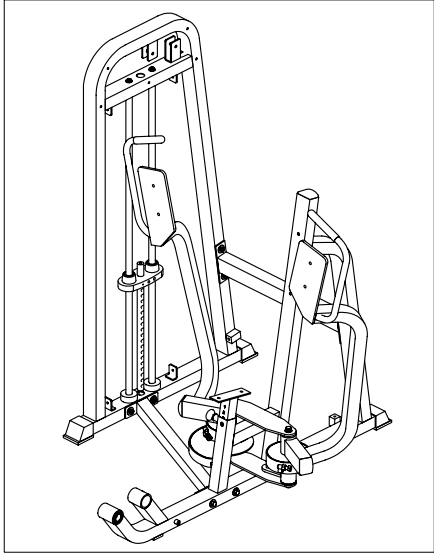
Part list of step 1

ITEM	DESCRIPTION	QTY
A	ASSY,WEIGHT SIDE FRAME	1
B	ASSY,BASE FRAME	1
3	TOP CROSS BRACE	1
4	BOTTOM CROSS BRACE	1
23	FOOT COVER 2"x2.75"	3
A2	BOLT,HHCS,1/2"-13*3 1/2",L=89	8
B1	WASHER,FLAT,1/2"	16
D1	LOCK NUT 1/2"-13	8




STEP 2

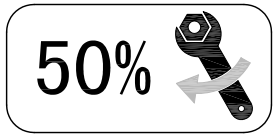
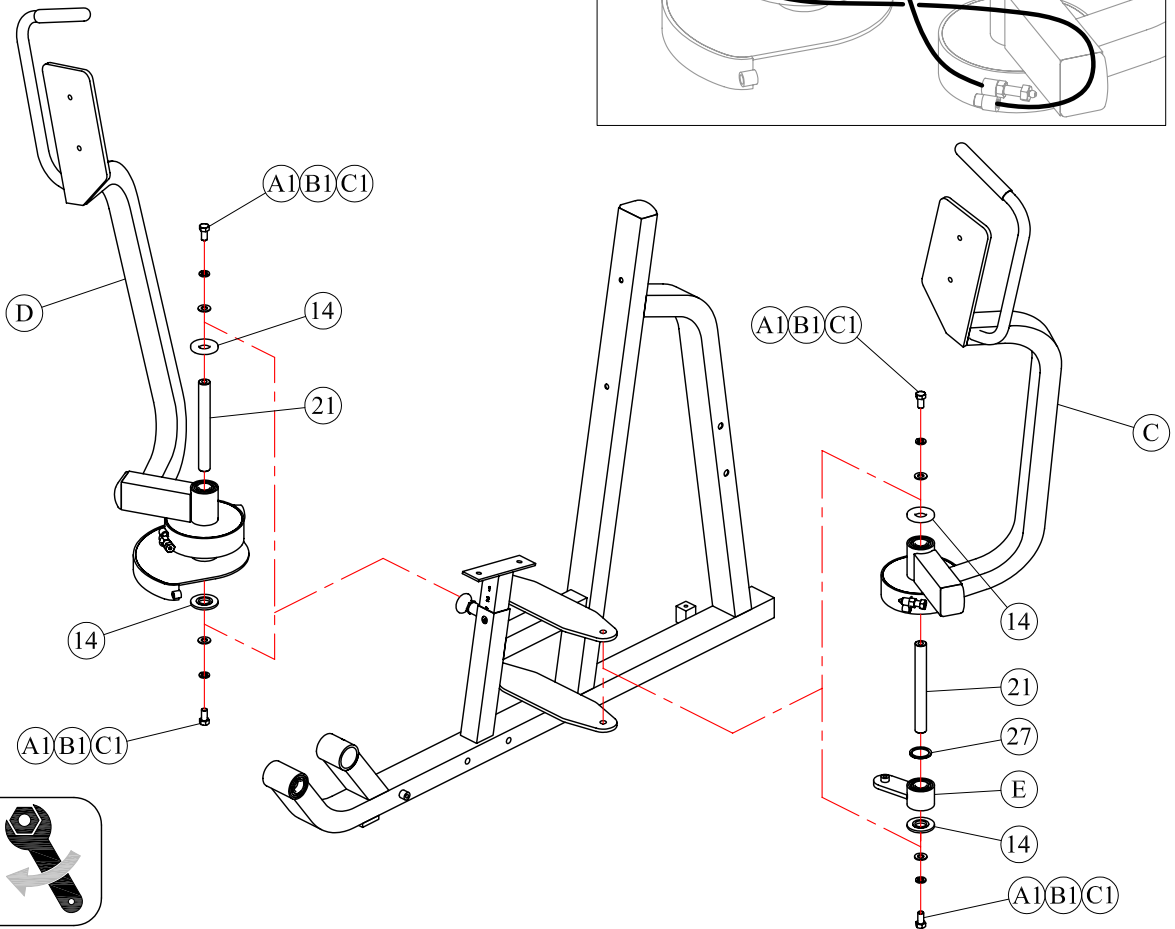
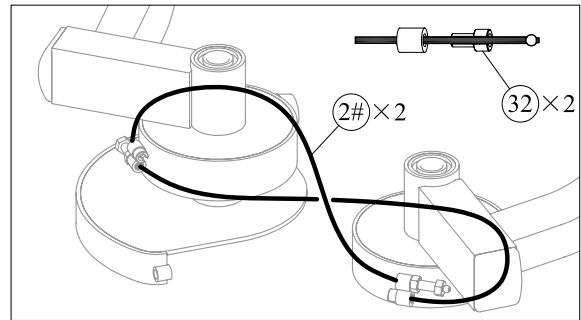
NOTE: During each assembly step, ensure that all bolts and nuts are in place and partially threaded in before completely tightening any one bolt.



Above shows step 2 assembled and completed.

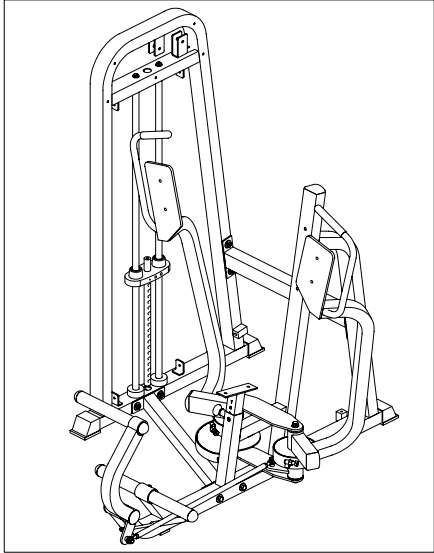
Part list of step 2

ITEM	DESCRIPTION	QTY
C	ASSY,LEFT ARM	1
D	ASSY,RIGHT ARM	1
E	ASSY,BAFFLE PLATE	1
14	CHROME WASHER (Ø60*25.4)	4
21	AXLE(Ø25*220)	2
27	WHITE LINING RING (Ø32*Ø25*1.5t)	1
32	CABLE END COLLET,ALUMINIUM (Ø4.8)	2
A1	BOLT,HHCS,1/2"-13*1",L=25	4
B1	WASHER,FLAT,1/2"	4
C1	LOCK WASHER Ø13	4
2#		2



STEP 3

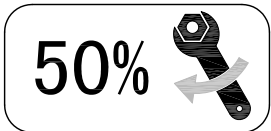
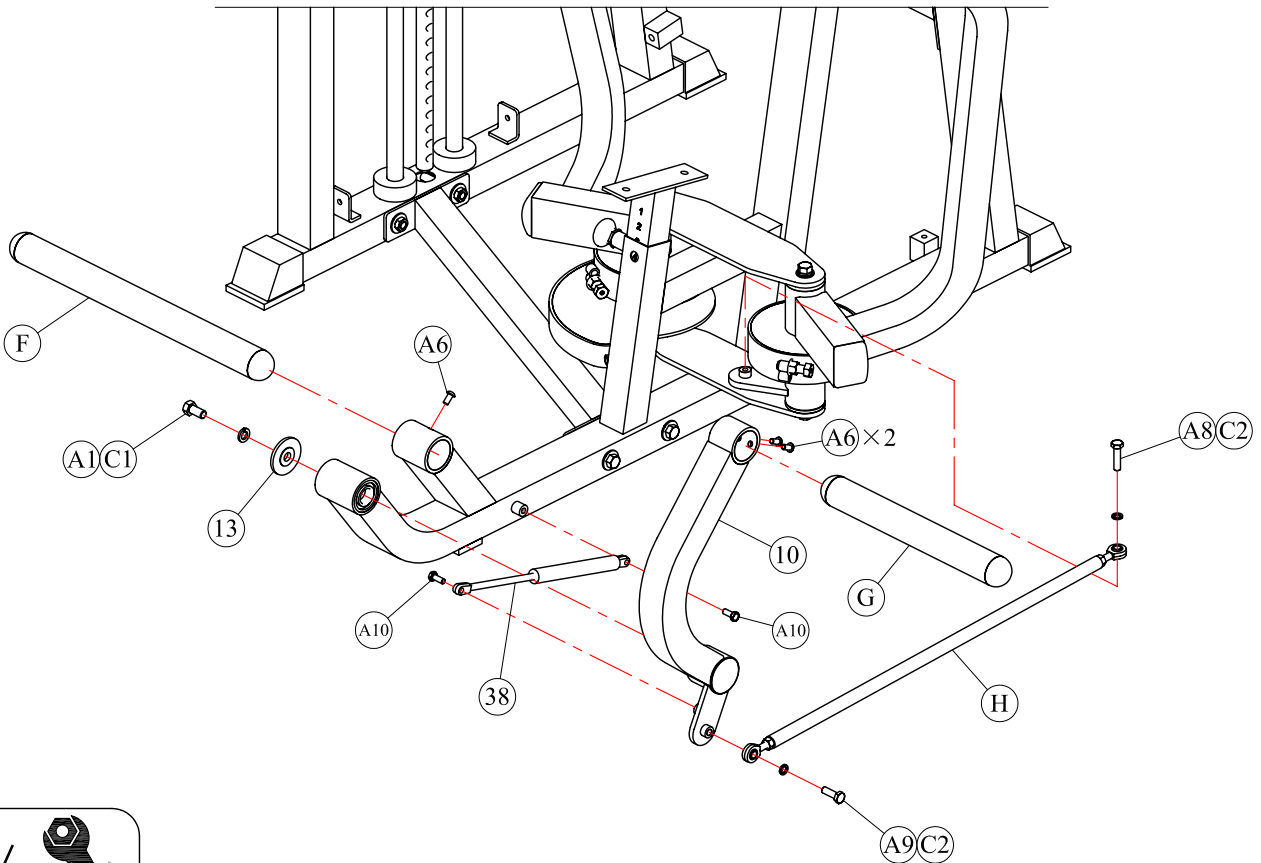
NOTE: During each assembly step, ensure that all bolts and nuts are in place and partially threaded in before completely tightening any one bolt.



Above shows step 3 assembled and completed.

Part list of step 3

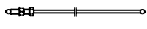
ITEM	DESCRIPTION	QTY
F	ASSY,FOOT TUBE	1
10	FOOT BOOSTER	1
G	ASSY,FOOT BOOSTER TUBE(Ø48)	1
H	ASSY,PUSH ROD(Ø20*725)	1
13	CHROME WASHER (Ø60*14)	1
38	GAS SPRING(30kg)	1
A1	BOLT,HHCS,1/2"-13*1",L=25	1
A6	BOLT,HHCS,5/16"-18*3/4",L=16	3
A8	BOLT,HHCS,M10*40	1
A9	BOLT,HHCS,M10*30	1
A10	BOLT,HHCS,M8*20	2
C1	LOCK WASHER Ø13	1
C2	LOCK WASHER Ø10	2

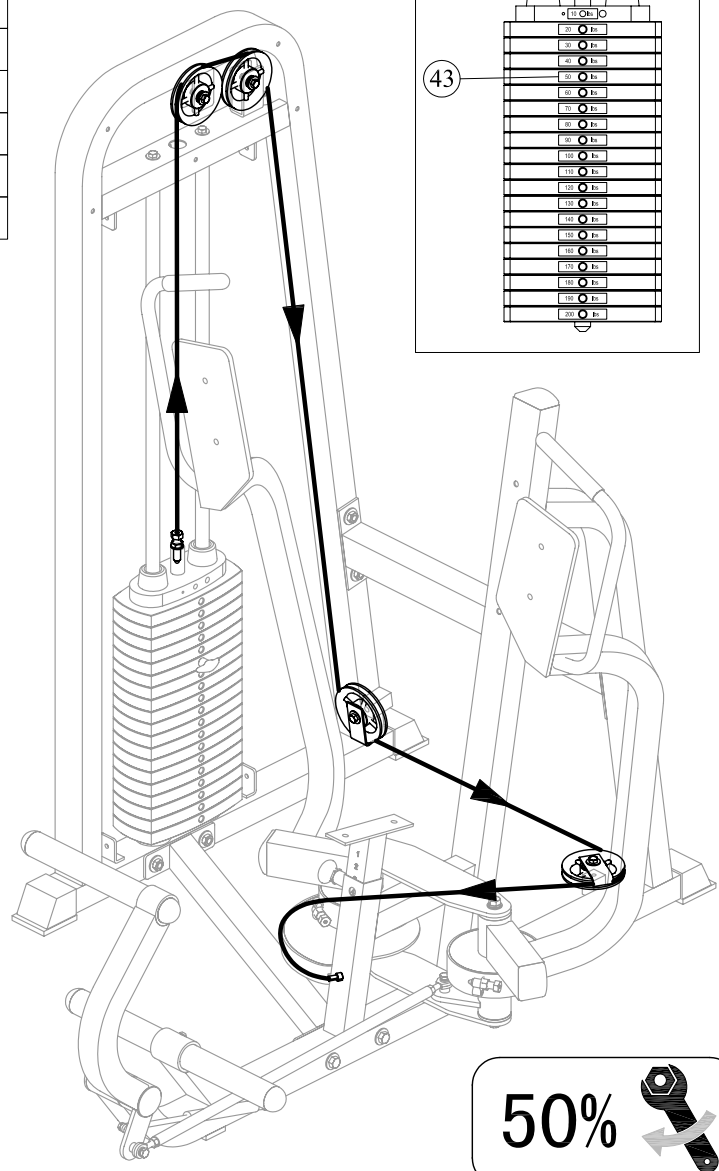
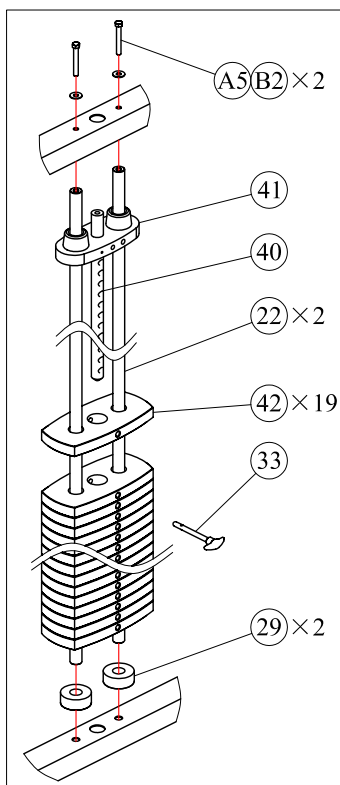
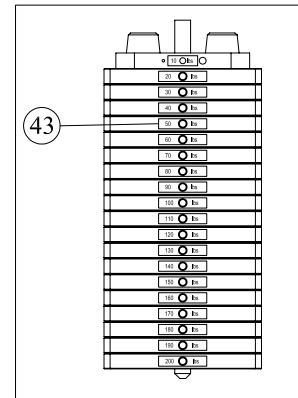
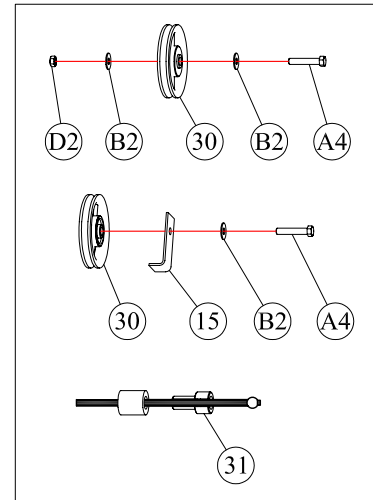


STEP 4

NOTE: During each assembly step, ensure that all bolts and nuts are in place and partially threaded in before completely tightening any one bolt. Two people will be required to perform this procedure.

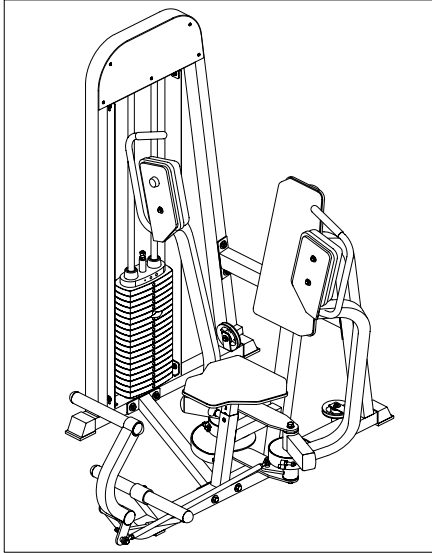
Part list of step 4

ITEM	DESCRIPTION	QTY
15	CABLE RETAINER BRACKET(4.5")	2
22	WEIGHT STACK GUIDE ROD(L=1400)	2
29	RUBBER DONUT	2
30	NYLON PULLEY ASSEMBLY(4.5")	4
31	CABLE END COLLET,ALUMINIUM (Ø5,8)	1
33	SELECTOR PIN	1
40	WEIGHT STACK PIN 19 HOLE	1
41	TOP WEIGHT	1
42	WEIGHT STACK (10LBS)	19
43	WEIGHT PLATE DECAL (10-200LBS)	1
A4	BOLT,HHCS,3/8"-16*2",L=50	4
A5	BOLT,HHCS,3/8"-16*2 3/4",L=70	2
B2	WASHER,FLAT,3/8"	8
D2	LOCK NUT 3/8"-16	2
1#		1



STEP 5

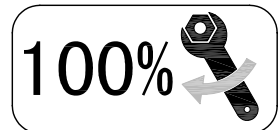
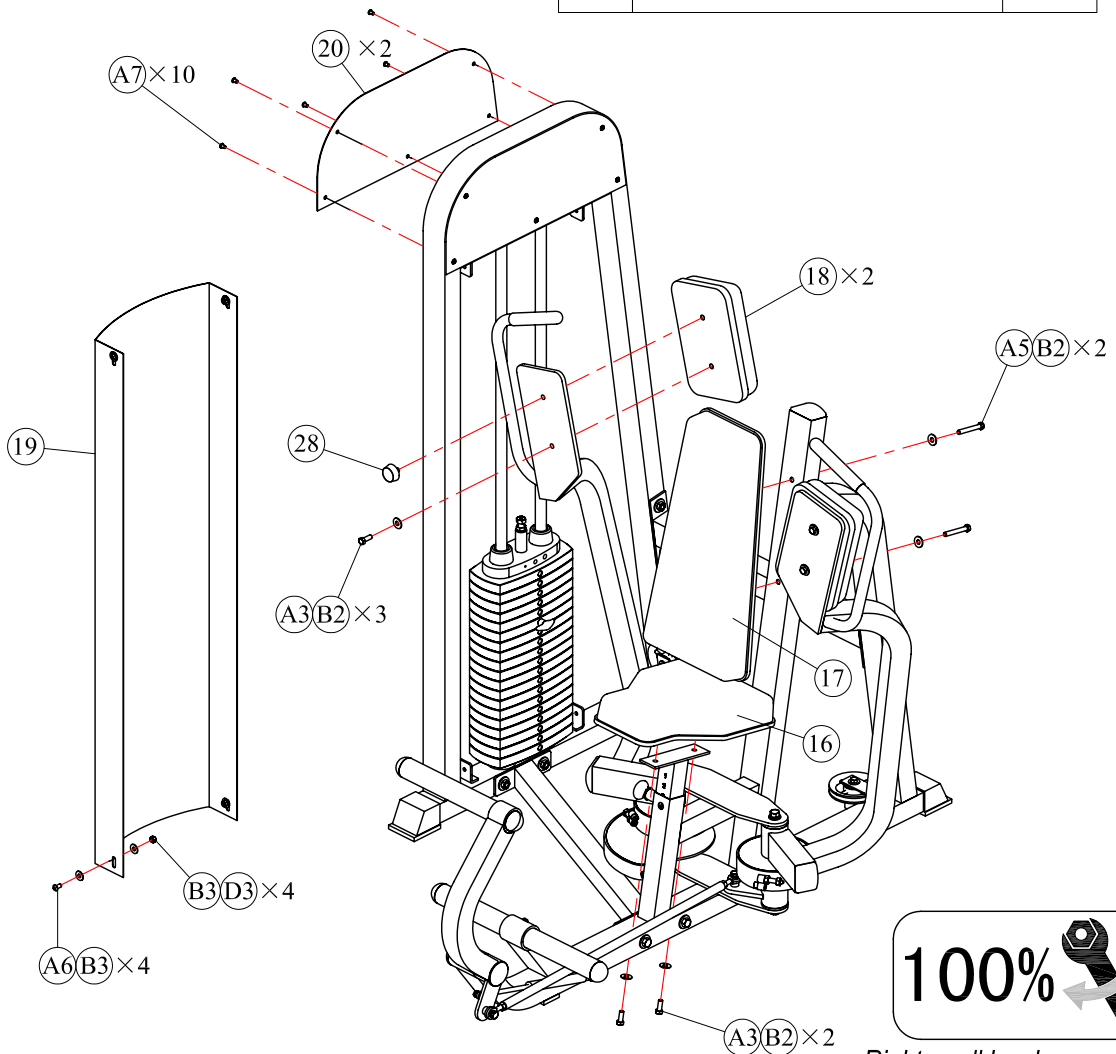
NOTE: During each assembly step, ensure that all bolts and nuts are in place and partially threaded in before completely tightening any one bolt.



Above shows step 5 assembled and completed.

Part list of step 5

ITEM	DESCRIPTION	QTY
16	SEAT PAD	1
17	BACK PAD	1
18	ELBOW PAD	2
19	WEIGHT STACK SHIELD	1
20	WEIGHT STACK FRAME SHIELD	2
28	RUBBER BUMPER(3/8"-16)	1
A3	BOLT,HHCS,3/8"-16*1",L=25	5
A5	BOLT,HHCS,3/8"-16*2 3/4",L=70	2
A6	BOLT,HHCS,5/16"-18*3/4",L=16	4
A7	BOLT,HHCS,1/4"-20*1/4",L=8	10
B2	WASHER,FLAT,3/8"	7
B3	WASHER,FLAT,5/16"	8
D3	NUT 5/16"-18	4



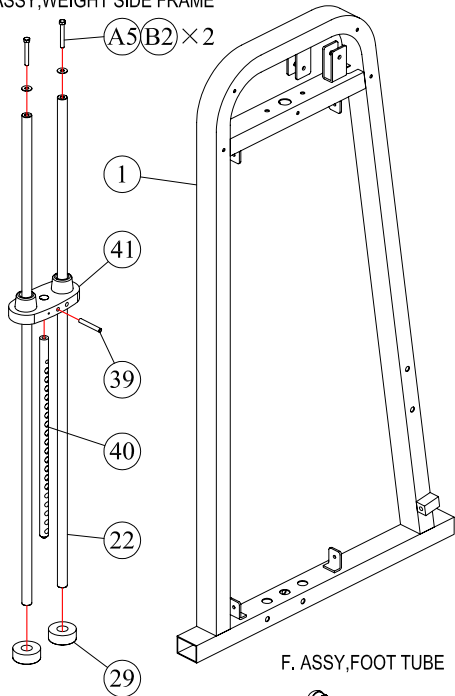
Righten all hardware securely!

PRE-ASSEMBLY

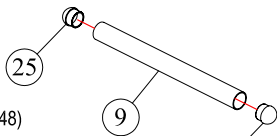
PART LIST:

ITEM	DESCRIPTION	QTY
A	ASSY,WEIGHT SIDE FRAME	1
B	ASSY,BASE FRAME	1
C	ASSY,LEFT ARM	1
D	ASSY,RIGHT ARM	1
E	ASSY,BAFFLE PLATE	1
F	ASSY,FOOT TUBE	1
G	ASSY,FOOT BOOSTER TUBE(Ø48)	1
H	ASSY,PUSH ROD(Ø20*725)	1

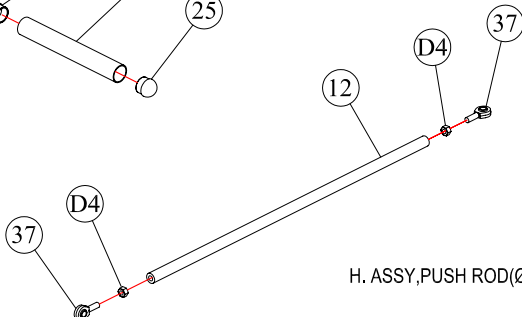
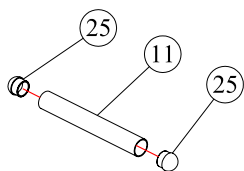
A. ASSY,WEIGHT SIDE FRAME



F. ASSY,FOOT TUBE

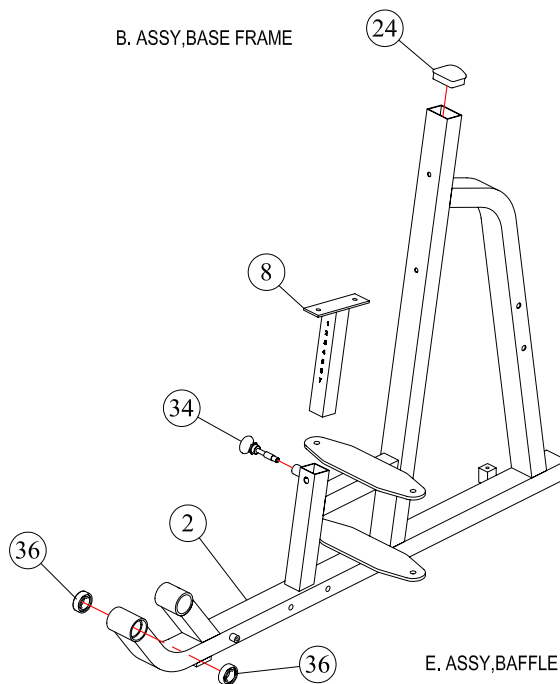


G. ASSY,FOOT BOOSTER TUBE(Ø48)

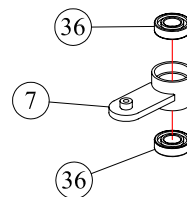


H. ASSY,PUSH ROD(Ø20*725)

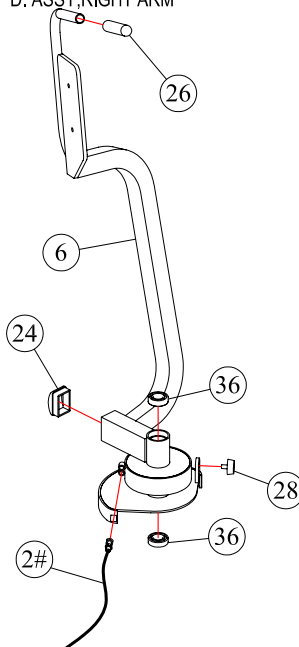
B. ASSY,BASE FRAME



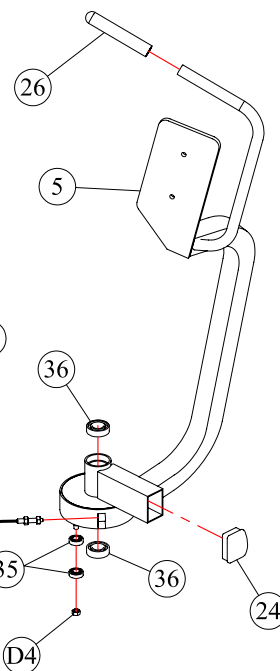
E. ASSY,BAFFLE PLATE



D. ASSY,RIGHT ARM



C. ASSY,LEFT ARM



PART LIST 1

PART LIST:

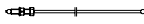

ITEM	DESCRIPTION	QTY
1	WEIGHT SIDE FRAME	1
2	BASE FRAME	1
3	TOP CROSS BRACE	1
4	BOTTOM CROSS BRACE	1
5	LEFT ARM	1
6	RIGHT ARM	1
7	BAFFLE PLATE	1
8	SEAT TUBE	1
9	FOOT TUBE	1
10	FOOT BOOSTER	1
11	FOOT BOOSTER TUBE(Ø48)	1
12	PUSH ROD(Ø20*725)	1
13	CHROME WASHER (Ø60*14)	1
14	CHROME WASHER (Ø60*25.4)	4
15	CABLE RETAINER BRACKET(4.5")	2
16	SEAT PAD	1
17	BACK PAD	1
18	ELBOW PAD	2
19	WEIGHT STACK SHIELD	1
20	WEIGHT STACK FRAME SHIELD	2
21	AXLE(Ø25*220)	2
22	WEIGHT STACK GUIDE ROD(L=1400)	2
23	FOOT COVER 2"x2.75"	3
24	PLASTIC INSERT CAP 2"x2.75"	3
25	PLASTIC INSERT CAP DIA 2"	4
26	HANDLE (Ø24*165mm)	2
27	WHITE LINING RING (Ø32*Ø25*1.5t)	1
28	RUBBER BUMPER(3/8"-16)	2
29	RUBBER DONUT	2
30	NYLON PULLEY ASSEMBLY(4.5")	4
31	CABLE END COLLET,ALUMINIUM (Ø5.8)	1
32	CABLE END COLLET,ALUMINIUM (Ø4.8)	2
33	SELECTOR PIN	1
34	PUSH PULL PIN (L=72,LOCKED)	1
35	RADIAL BALL BEARING(6201)	2
36	RADIAL BALL BEARING(6205)	8
37	ROD END BALL JOINT,STYLE 2 ,M10	2
38	GAS SPRING(30kg)	1
39	SPRING PIN(Ø10*70)	1
40	WEIGHT STACK PIN 19 HOLE	1
41	TOP WEIGHT	1

ITEM	DESCRIPTION	QTY
42	WEIGHT STACK (10LBS)	19
43	WEIGHT PLATE DECAL (10-200LBS)	1
44	LABEL(CLUB LINE,700*150)	1
45	LOGO	2
46	CAUTION DECAL(ROTATING PART)	2
47	CAUTION DECAL(WEIGHT PART)	1
48	PLACARD DECAL	1

HARDWARE LIST:

ITEM	DESCRIPTION	QTY
A1	BOLT,HHCS,1/2"-13*1",L=25	5
A2	BOLT,HHCS,1/2"-13*3 1/2",L=89	8
A3	BOLT,HHCS,3/8"-16*1",L=25	5
A4	BOLT,HHCS,3/8"-16*2",L=50	4
A5	BOLT,HHCS,3/8"-16*2 3/4",L=70	4
A6	BOLT,HHCS,5/16"-18*3/4",L=16	7
A7	BOLT,HHCS,1/4"-20*1/4",L=8	10
A8	BOLT,HHCS,M10*40	1
A9	BOLT,HHCS,M10*30	1
A10	BOLT,HHCS,M8*20	2
B1	WASHER,FLAT,1/2"	20
B2	WASHER,FLAT,3/8"	15
B3	WASHER,FLAT,5/16"	8
C1	LOCK WASHER Ø13	5
C2	LOCK WASHER Ø10	2
D1	LOCK NUT 1/2"-13	8
D2	LOCK NUT 3/8"-16	2
D3	NUT 5/16"-18	4
D4	NUT M10	3

CABLE LIST:

ITEM	DESCRIPTION	QTY
1#		1
2#		2

Hardware guide:

